

AWUS036H MAC OS Installation Guide

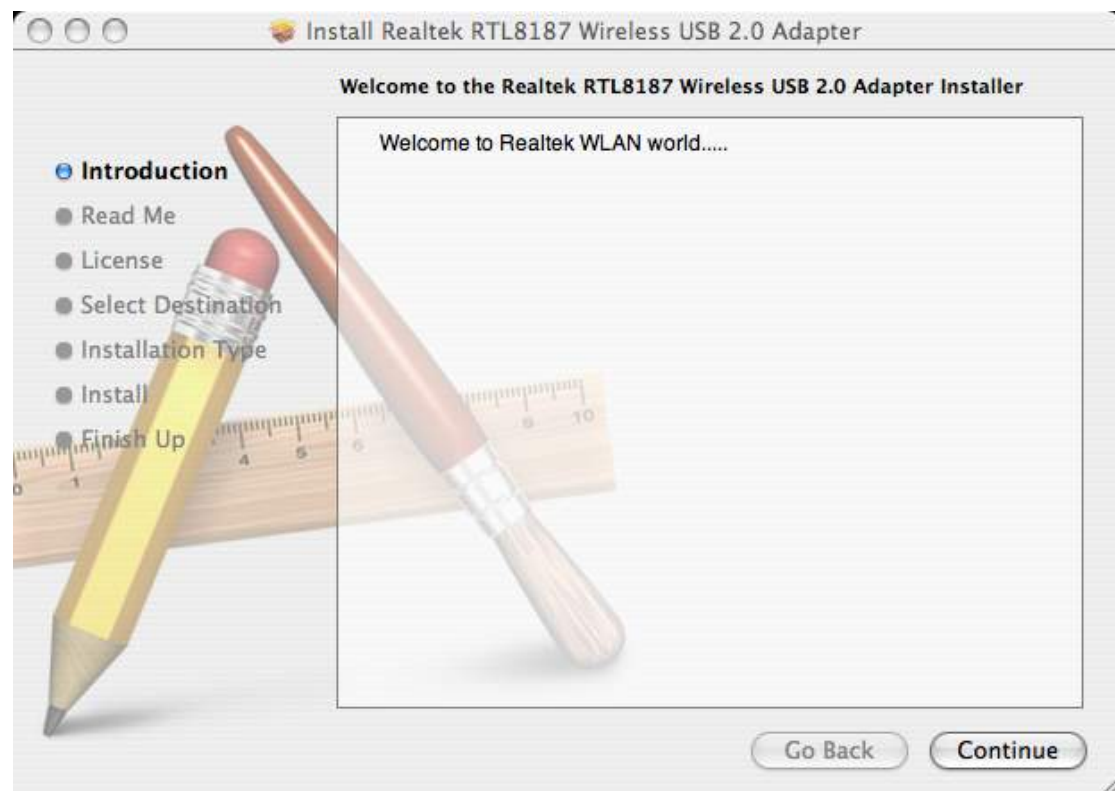
Step1. Copy “macx10.4-8187(126).zip” to MAC OS.

Step2. Unzip “macx10.4-8187(126).zip”.

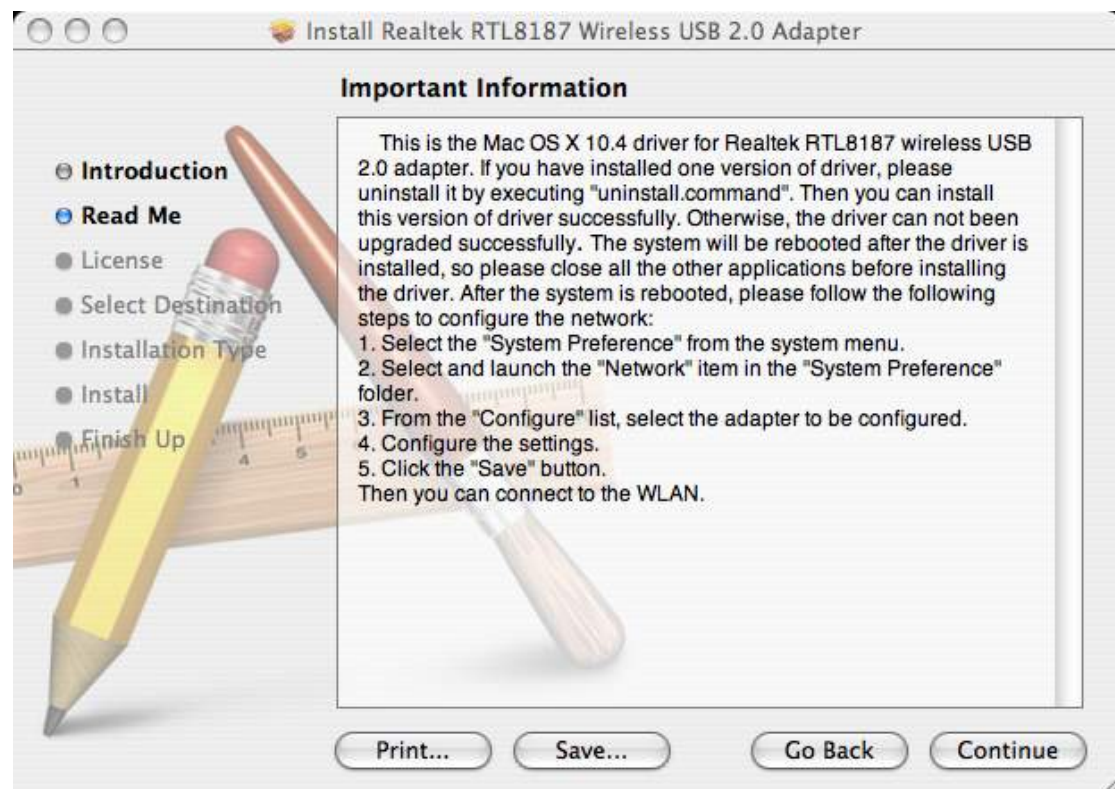
Step3. Double click “RTL8187.pkg” to execute it.



Step4. Click “Continue” bottom.



Step5. Click “Continue” bottom.



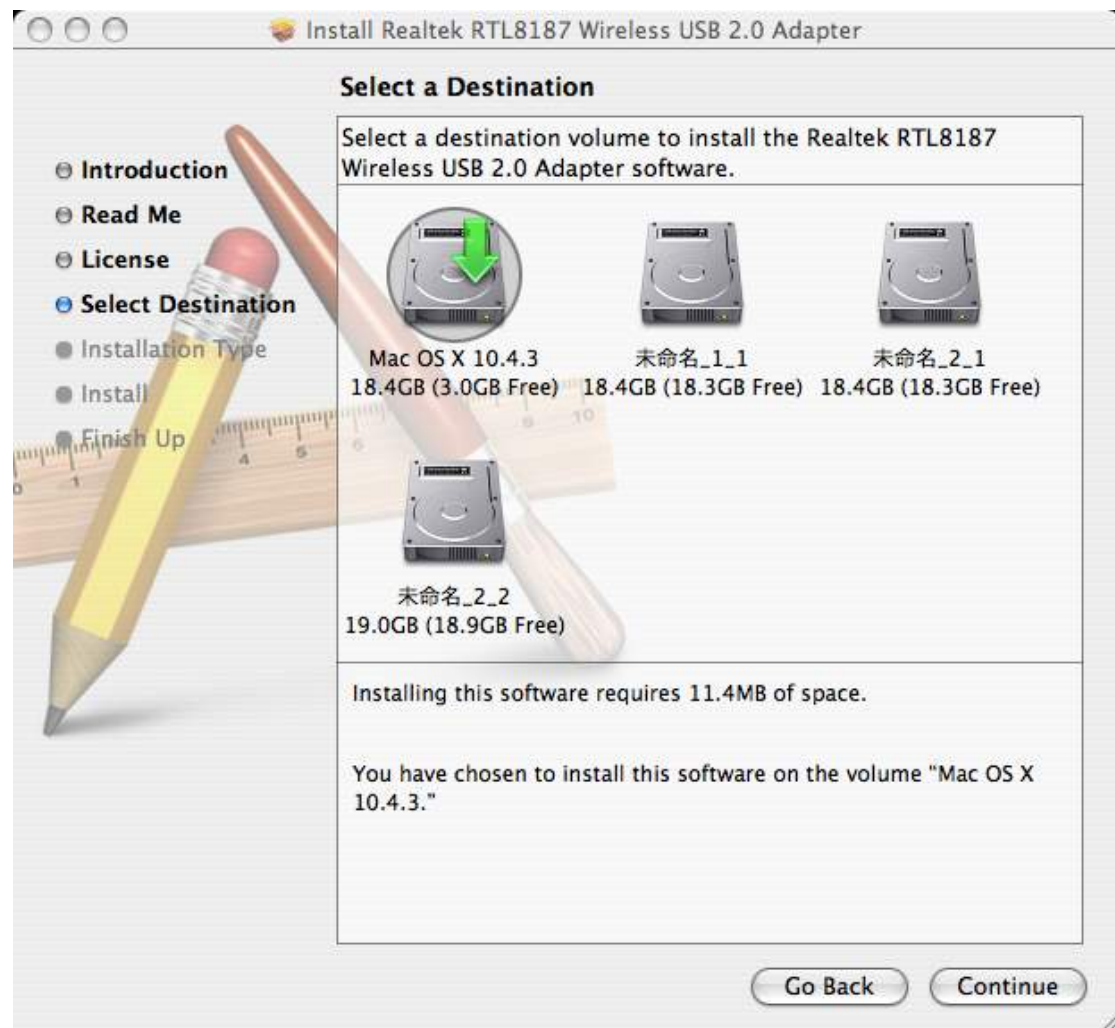
Step6. Select “Software License Agreement” language and click “Continue” bottom.



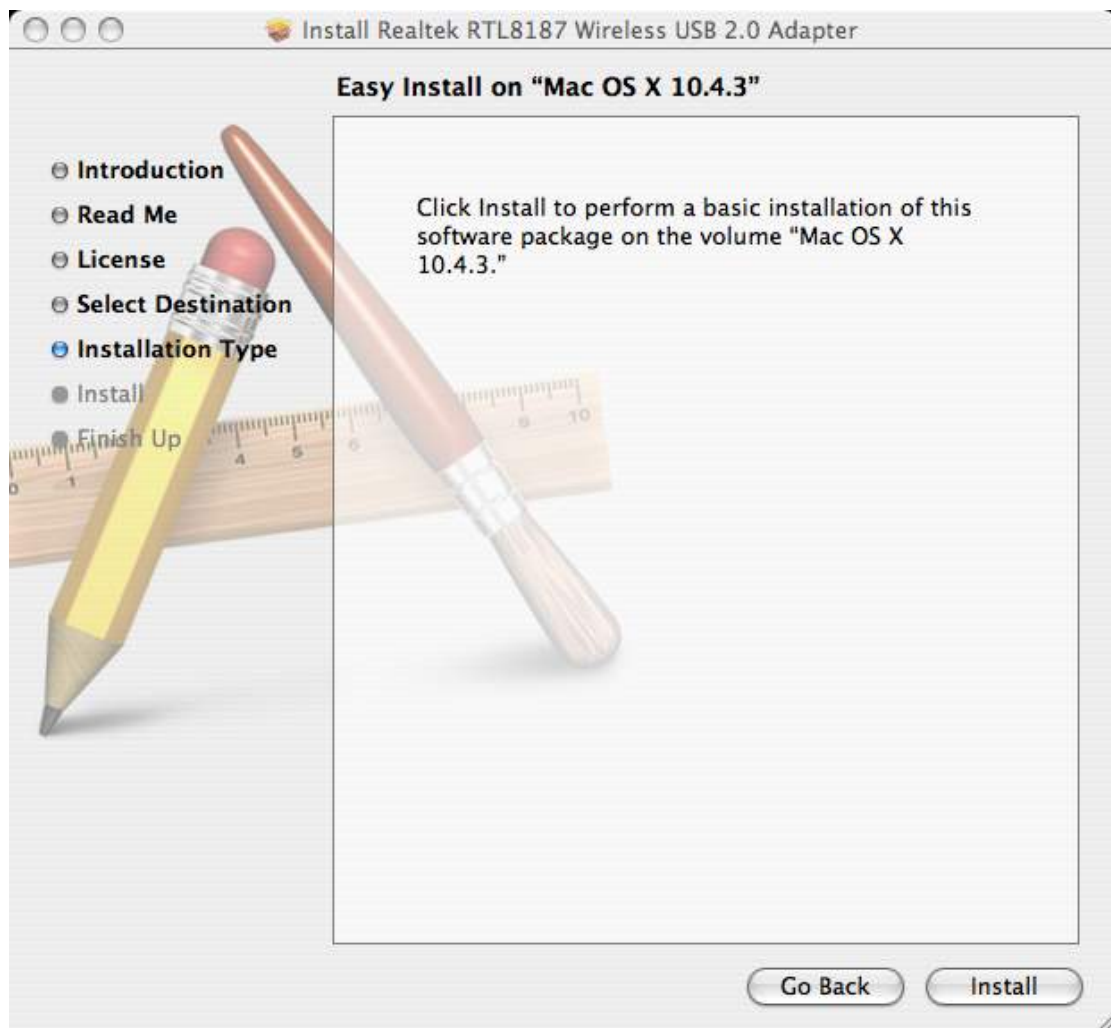
Step7. Click “Agree” bottom.



Step8. Select a destination and click “Continue” bottom.



Step9. Click “Install” bottom.



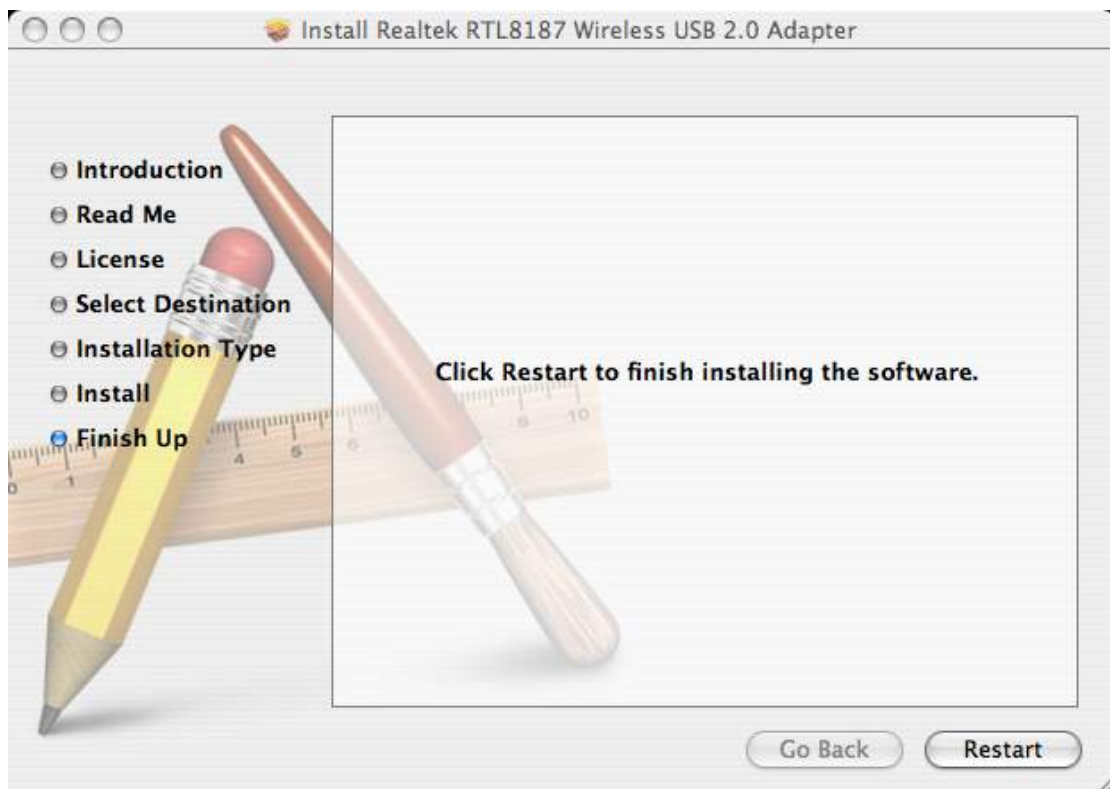
Step10. Key in your administrator password and click “OK” bottom.



Step11. Click “Continue Installation” bottom.



Step12. After finishing installation, click “Restart” bottom to reboot your PC.



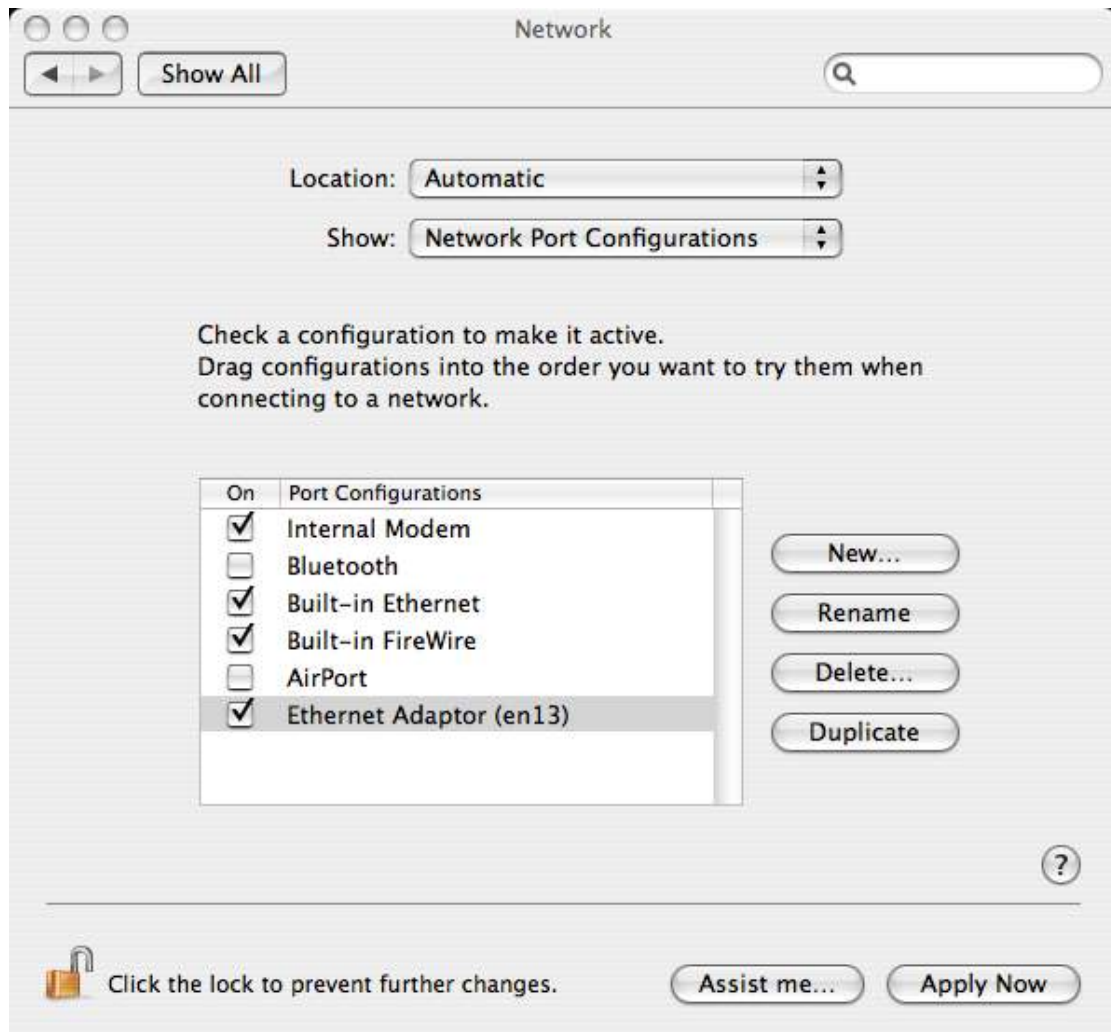
Step13. Plug in RTL8187 USB device and enable it from “Network” of “System Preferences”.



Step14. Click “OK” bottom.



Step15. Select “Network Port Configurations” and make sure that “Ethernet Adaptor” is selected. Then, click “Apply Now” bottom.



Step16. Copy “Realtek WLAN Client Utility” from “RTL8187 Mac OS X 10.4 software suite v1.2.6” folder to your desktop. Then, you can start to use RTL8187 USB device.

