



4F-1, NO. 106 RUEIGUANG RD., TAIPEI, TAIWAN
T: 02-27968477, F: 02-27968478
Website: www.alfa.com.tw

Alfa Tube-U(N) Install Guide

For Apple Mac OS 10.5 and 10.6

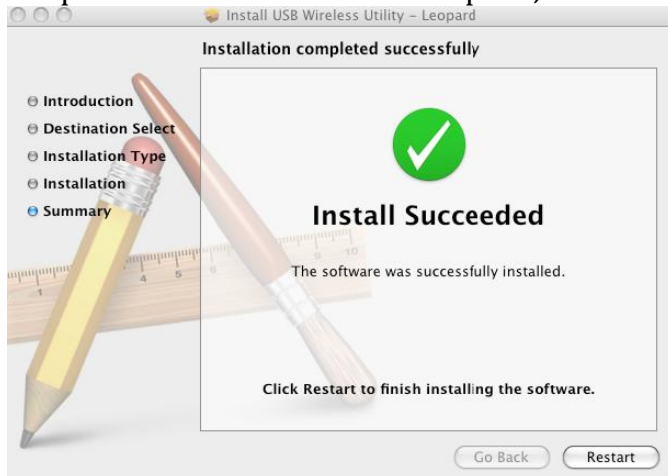
Part I - Software Installation

This will guide you through the installation of Alfa Networks model Tube-U(N) 802.11n wireless USB adapter on your Mac.

Do not connect the wireless adapter to your computer yet. If you have already connected your wireless adapter, please disconnect. Insert CD that came with your device into your CD drive. When the CD icon appears on your desktop, double-click the icon. Then, select and double-click the Mac folder. Once the Mac folder is open locate the folder for your version of Mac OS.

- If you are not sure what version of Mac OS you have, click on the Apple menu and select *About* this Mac.

1. Double-click the folder for your version of Mac OS.
2. Inside, double-click the program called *install*. A new window will then open on your Mac.
3. Select the folder for your version of Mac OS again. Inside there will be an install program, and an uninstall program.
4. Double-click the install program.
5. The installation wizard will begin launch once installation has been selected. Proceed to follow the steps of the wizard to install the software onto your computer. Once the wizard is complete, click the *Restart* button.



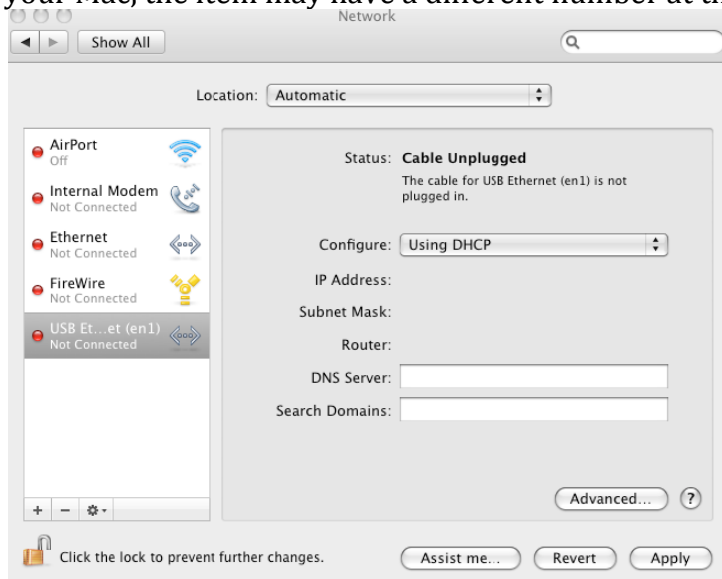
Part II – One-time configuration

Once your system reboots, you can connect the adapter to the computer. Be sure to connect it to a USB port located on the Mac itself, and not to a port on an USB hub or the USB port on the Mac keyboard. In order to begin using your Alfa Tube-U(N), once the setup program is complete and you have rebooted, there is a one-time configuration step you must follow.

Click on the Apple menu in the top left corner of your screen. Go to System Preferences.



Inside System Preferences, double-click the Network icon. On the left-hand side of the Network window, locate the device called USB Ethernet Adapter (en1) it may be abbreviated as USB...eth. If you have previously installed a wireless USB adapter on your Mac, the item may have a different number at the end.



Click on the device name so that it is highlighted and click *Apply Now* button at the bottom. You may now close this window.

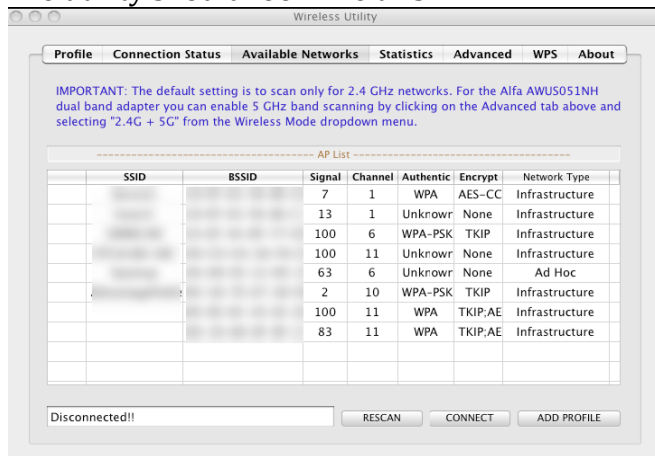
Part III – Connecting to Networks

This section explains how to use the Alfa Tube-U(N) wireless utility program that will connect to other networks. It also includes information about the different features of wireless utility program.

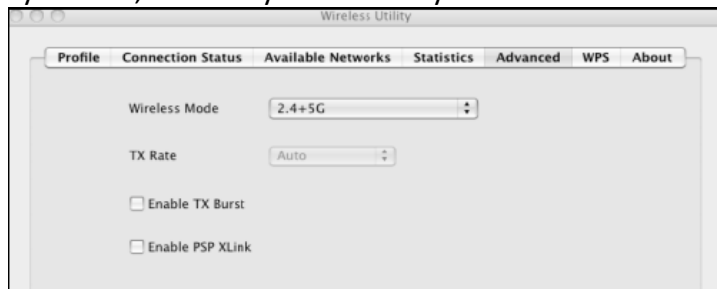
Note that the Alfa Tube-U(N), like any Mac-compatible wireless USB adapter, does not use Apple’s Airport software. If your computer has an Apple Airport card installed, it is important that you turn off the Apple Airport card on the top of your Airport menu screen when your Alfa Tube-U(N) is ready for use.

When you begin using the Alfa Tube-U(N), locate the wireless utility program on your screen that may have loaded automatically once you have completed configuration of the device. Or you can choose to launch the wireless utility program by clicking on the icon that says “Ralink” on your dock (future versions of the software will have an Alfa icon).

The utility should look like this:



By default, the utility is set to only scan in the 2.4 GHz band network.



Next, click on the Available Networks (or Site Survey) tab and locate your network in the list of available networks. If you do not see any networks, click the *Rescan* button.

Click on your network and the connect button. If you are connected to an open

(unsecured) network, you should see the status at the bottom of the window change to “Connected”. It may take up to a minute for the connection to fully authenticate, usually occurs within 10-15 seconds.

If your network is password protected, you will receive a prompt to enter your security key (also known as an encryption key or pass key). Once you have correctly entered your password, click OK and you should then be connected.

Additional features of the utility

Profile - click on the Profile tab to create a profile for your wireless network. This allows you to save your encryption pass key in the utility so that you do not need to enter it each time you want to connect to the network.

Link Status - the Connection Status window will give you details about your connection including signal strength, link quality, and data transfer speed.

Statistics/Advanced - these tabs offer data and options for advanced networking users. It is not recommended to change any of the settings in the tab.

WPS - Wi-Fi protected setup. If your router is configured with WPS, use this window to connect to it.

Part IV – Frequently Asked Questions

1. Can I exit out of the wireless connection utility program?
Just like the Apple Airport card, the software must be running in the background to maintain your Internet connection. If the software is terminated, your connection will be lost. The Apple Airport card software is located in the menu bar at the top of your screen and the software for Alfa Tube-U(N) is located at the bottom in your dock. You may minimize the window but exiting the window will end your Internet connection.
2. What happens if I am connected to my network and the web browser displays an error in Safari saying “You are not connected to the Internet?”
Once you have connected to the network, it can take up to a minute for the connection to authenticate, though it usually only takes about 10-15 seconds. During this time the wireless utility program may show that you are connected, but you won’t have web access yet. If you are still unable receive web access for more than a minute after establishing your connection, the problem may be encryption related. Please attempt to connect again, and then contact your retailer for further support.
3. The specs for this product says 300 mbps max speed, but the Connection Status tab reports says that I am only connected at 54 mbps, why is that?
This most likely means you are connected to an 802.11g router. To achieve speeds above 54 mbps you must be connected to an 802.11n router. Some

802.11n routers have top speeds of 150 mbps. If you have a 300 mbps router but unable to achieve speeds above 150 mbps, please contact your retailer for further support.